

The
Strand
Gallery

Richard Maurovic

'Fleurieu and Beyond'

January 2022

The Strand Gallery

41 The Strand

Port Elliot, South Australia

www.strandgallery.com.au

Sonya Hender 0419 501 648

sonya.hender@hender.com



'View Over Port Elliot'

Richard Maurovic 2021

Richard Maurovic

'Fleurieu and Beyond'

We are very pleased to present another exhibition of new painting by Richard Maurovic, a unique artist and also wonderful to work with. In the last 12 months, Richard has explored the Fleurieu Peninsula and has produced a unique body of new work which captures familiar views in his distinctive technique. Toni Radway, Richard's partner grew up Goolwa and their travels to the seascape and surrounds in preparation for this exhibition have been a shared experience.

Some paintings border on surrealism whilst others are impressionistic renderings that bring life to 'everyday' scenes. Richard adds character and emotional response to quite prosaic subjects. Richard draws on many influences including the work of Jeffrey Smart who also had a strong connection to the Port Elliot. Maurovic describes his introduction to the work of Jeffrey Smart as an epiphany. It was a powerful affirmation of the kind of work he wanted to do with a technique within his capabilities. Years of art practice combined with ongoing development of skills and ideas has resulted in an ever-changing body of work reflecting a singular visual sense, as well as humour, intelligence and artistic style.

Richard has received numerous awards and recognition throughout his career. This includes being selected as a finalist in the Fleurieu Art Prize on numerous occasions and a finalist in many national art prizes such as the Maritime Art Award, Melbourne, Mosman Art Prize, Sydney and the Royal Overseas League Exhibition, London, United Kingdom. He has been the overall winner of the City of West Torrens Art Prize, Adelaide, 50th Anniversary Art Prize, National Railway Museum, Port Adelaide, Kidman Art Prize, 'Connections to the Land', Royal South Australian Society of Arts 150th Anniversary Art Prize, Adelaide and the Winsor & Newton Australian Art Award, Sydney. He has been the official artist for the new Adelaide Airport, Tasting Australia, Adelaide and the Crafers Highway Project, Adelaide. He has received significant civic awards such as the City of Salisbury Living Legend, Federal Government Centenary Medal and was the South Australian Citizen of the Year in 1994. His work is widely collected in private national and international collections and has been sought by major public institutions such as the Federal Court of Australia, Adelaide, Parliament House, Canberra, and Adelaide International Airport. His corporate clients include Fisher Jeffries, Adelaide, Santos, Qantas Airways, Sydney and Coopers Brewery, Adelaide.

For further information see. <http://maurovic.com.au>

'View Over Port Elliot'

Richard Maurovic

Oil on canvas / 60cm x 120cm

\$6,500



'View To Victor Harbor'

Richard Maurovic

Oil on canvas / 60cm x 120cm

\$6,500

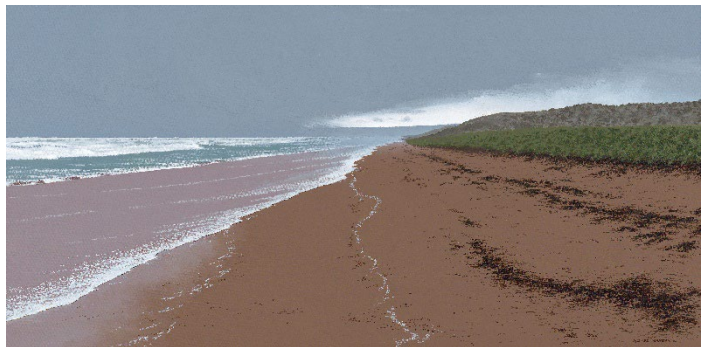


'Wintry Afternoon, Goolwa Beach'

Richard Maurovic

Oil on canvas / 60cm x 120cm

\$6,300

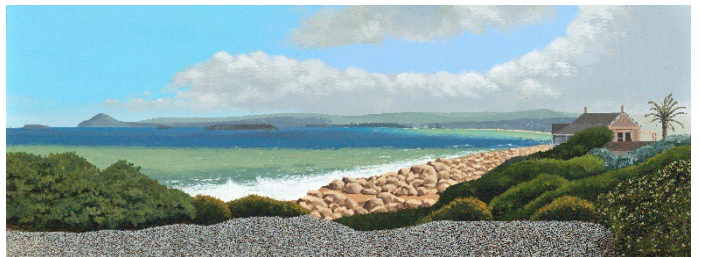


'Between Showers, Port Elliot'

Richard Maurovic

Oil on canvas / 45cm x 120cm

\$4,700



'Cockle Train Near Port Elliot'

Richard Maurovic

Oil on canvas / 45cm x 90cm

\$5,200



'Obelisk, Port Elliot'

Richard Maurovic

Oil on canvas / 30cm x 60cm

\$2,600



*'Sign Of The Times,
Northern Connector, Dry Creek'*

Richard Maurovic

Oil on canvas / 30cm x 60cm

\$2,600



'Victor Harbor Boating Channel'

Richard Maurovic

Oil on canvas / 30cm x 60cm

\$2,700

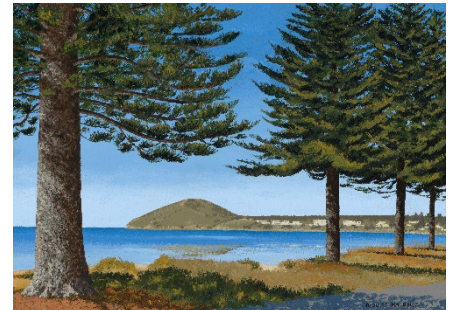


'Rosetta Head From Yilki'

Richard Maurovic

Oil on canvas / 36cm x 50cm

\$2,600



'Rosetta Head From Hindmarsh Valley'

Richard Maurovic

Oil on canvas / 25cm x 40cm

\$1,680

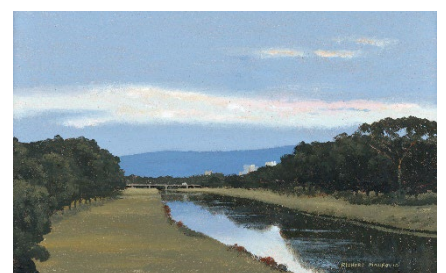


'River Torrens At Henley beach'

Richard Maurovic

Oil on canvas / 25cm x 40cm

\$1,680



'Majors Road, O'Halloran Hill'

Richard Maurovic

Oil on canvas / 23cm x 35cm

\$1,680



'Railcar At Port Elliot Railway Station'

Richard Maurovic

Oil on canvas / 25cm x 40cm

\$1,680



'Gazanias, Boomer Beach'

Richard Maurovic

Oil on canvas / 25cm x 40cm

\$1,680



'Victor Harbor Rd, Mount Compass Winter'

Richard Maurovic

Oil on canvas / 20cm x 30cm

\$980



'Victor Harbor Rd, Mount Compass Summer'

Richard Maurovic

Oil on canvas / 20cm x 30cm

\$980



'Stormy Day Port Elliot Beach'

Richard Maurovic

Watercolour / 14cm x 30cm

\$680



'Chiton Beach Clouds'

Richard Maurovic

Oil on canvas / 30cm x 20cm

\$880



'Produce Markets, Pooraka'

Richard Maurovic

Oil on canvas / 50cm x 100cm

\$4,500



'Railway Bridge Redhen'

Richard Maurovic

Oil on canvas / 20cm x 30cm

\$980



'North-South Motorway, Wingfield I'

Richard Maurovic

Oil on canvas / 23cm x 30cm

\$1,250



'Port Lincoln Train'

Richard Maurovic

Watercolour / 13cm x 21cm

\$580

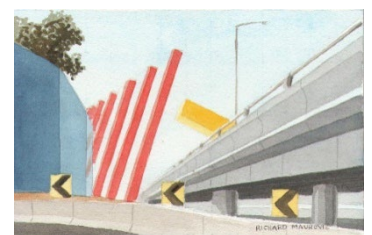


'Tullamarine Freeway, Melbourne'

Richard Maurovic

Watercolour / 13cm x 21cm

\$580



'Murray Bridge'

Richard Maurovic

Oil on canvas / 45cm x 30cm

\$2,200

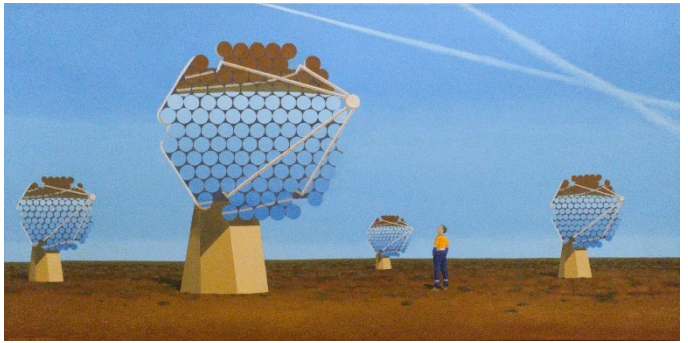


'The Watchers'

Richard Maurovic

Oil on canvas / 60cm x 120cm

\$5,480



'Dosette'

Richard Maurovic

Oil on canvas / 60cm x 88cm

\$4,500



'Are You Talking To Me?'

Richard Maurovic

Oil on canvas / 40cm x 70cm

\$3,500



'Longing For Home'

Richard Maurovic

Oil on canvas / 20cm x 25cm

\$1,100



'Charolais Express'

Richard Maurovic

Graphite / 8cm x 16cm

\$450

